



2010 CHUBB U. S. JUNIOR NATIONAL SAILING CHAMPIONSHIPS

U. S. SINGLEHANDED CHAMPIONSHIP for the Bemis Trophy
DOUBLEHANDED CHAMPIONSHIP for the Smythe Trophy



August 15-18, 2010



Organizing Authority: United States Sailing Association

Host: San Diego Yacht Club, Southwestern Yacht Club

Sponsors: Chubb Insurance Group, LaserPerformance,
Hobie Performance Sunglasses and Gill NA



SAILING INSTRUCTIONS

1 RULES

- 1.1 The regatta will be governed by the rules as defined in The Racing Rules of Sailing. The following documents will apply:
- 1.2 US SAILING Regulation 10. <http://about.ussailing.org/Assets/Bylaws/US+SAILING+Regs08.pdf>
- 1.3 The Conditions for the United States Junior Sailing Championships.
<http://championships.ussailing.org/Youth/ChubbJrChampionships/Conditions.htm>
- 1.4 The US SAILING Championship Support Vessel Policy.
http://championships.ussailing.org/Youth/Coaching_and_Support_Vessels.htm
- 1.5 In case of conflict between the Notice of Race and the Sailing Instructions, the Sailing Instructions will prevail. This changes rule 63.7.
- 1.6 Appendix P – Special Procedures for Rule 42 of the rules will apply.

2 RECALL NUMBERS

Boats shall display recall numbers provided by Laser Performance at the top of the mainsail. These numbers shall be placed in accordance with the instructions issued with the numbers.

It is each competitor's responsibility to maintain the visibility of recall numbers. Loss of or damage to a recall number shall not be grounds for redress. This changes rule 62.1.

3 NOTICES TO COMPETITORS

Notices to Competitors will be posted on the official regatta notice board located on the east side (facing the water) of the SDYC Sailing Center for Doublehand competitors and on the official regatta notice board located on the north side of the SWYC Junior Building facing the lawn for Singlehand competitors.

4 CHANGES TO SAILING INSTRUCTIONS

Changes to the SIs will be posted no later than 20 minutes after the close of the morning briefing on the day it takes effect, except that any change to the schedule of races will be posted no later than the end of the protest time limit on the day before it will take effect.

5 SIGNALS MADE ASHORE

- 5.1 Signals ashore will be displayed from the main flag pole next to the main clubhouse at both SDYC/SWYC.
- 5.2 Boats are not allowed to launch before code flag D is displayed with one sound.
- 5.3 When flag AP is displayed ashore, '1 minute' is replaced with 'not less 75 minutes' in the race signal AP. Boats shall not leave the club; wait for further instructions. This changes rule Race Signals AP.

6 SAFETY AND PERSONAL EQUIPMENT

- 6.1 All competitors in US SAILING Championships, at all levels, shall wear, while on the water, other than brief periods while adding or removing clothing, an approved US Coast Guard Type III or Type V PFD that depends 100% on foam for flotation. The PFD must be worn outside of all clothing, except that a thin shirt may be worn over the PFD to prevent snagging.
- 6.2 Before the warning signal of the first race in which they intend to compete each day, boats shall check in by sailing on starboard tack of their class's race committee signal boat. Each boat shall hail her recall number until acknowledged by the signal boat. Failure to check in may result in a penalty.
- 6.3 A boat retiring from a race shall notify a RC vessel before leaving the course, or, when that is impossible, the front desk at SDYC/SWYC immediately after arrival ashore.
- 6.4 The only gear, rigging, or equipment that a team may take aboard a boat shall be: magnetic card compass, flags, plastic bucket or bailer, normally equipped ditty-bag, personal effects, including PFDs and protective clothing. For the events using the C420, permission is granted to bring Fast-pins, and the competitors are required to bring their own trapeze harnesses.
- 6.5 Electronic fluxgate compasses and GPS devices of all varieties, styles and combinations are specifically banned.

7 SPECIAL SIGNALS

The display of code flag H at the finish of any race means: "Racing has ended for the day and competitors shall proceed directly to shore."

8 SCHEDULE OF RACES

8.1 Schedule

Sunday, August 15

1000 - 1600 hrs Arrival, registration and charter boat pick-up
1700 - Mandatory Competitors' Meeting at SDYC Sailwash lawn

Monday, August 16

0800 - 1000 hrs Late Registration - for those granted permission ONLY
1200 - First Warning Signal

Tuesday, August 17

9300 - Morning Briefing
1200 - First Warning Signal

Wednesday, August 18

0930 - Morning Briefing
1200 - First Warning Signal
1400 - No Warning Signal after this time
1630 - 1800 - Pack-up Boats

- 8.2 There are a maximum of 10 races scheduled.
- 8.3 The warning signal for succeeding races will be made as soon as possible.
- 8.4 To alert boats that a race will begin soon, an orange flag will be displayed with one sound for at least 4 minutes before a warning signal is displayed.
- 8.5 Weather conditions, the need to protect borrowed boats and equipment, or the need to expedite the completion of the event may require procedures other than those mentioned in these Sailing Instructions. Any such special procedures must be approved by the Protest Committee.
- 8.6 Shortened Event. Should wind, weather or other conditions make it impossible to complete the scheduled number of races within the publicized time, the event shall be terminated and the results based on the completed number of races. Termination and decisions regarding results shall be made by the Protest Committee.

9 CLASS FLAG

The class flags will be:

Singlehanded Division – Light Blue Flag

Doublehanded Division – Purple Flag

10 RACING AREA

The sailing area will be in the Coronado Roads, southeast of Point Loma. See chart in Attachment B

11 THE COURSE

- 11.1 The diagrams in Attachment C show the courses, including the course signals, the order in which marks are to be passed, and the side on each mark is to be left.
- 11.2 No later than the warning signal, the race committee signal boat will display the course designation and the approximate distance of the first leg.
- 11.3 If one of the gate marks is missing, the remaining mark in position will be rounded to port.

12 MARKS

- 12.1 Rounding marks will be yellow tetrahedrons.
- 12.2 New marks will be orange tetrahedrons.
- 12.3 The start and finish buoys will be white cylinders.

13 THE START

- 13.1 The starting line will be between a staff displaying an orange flag on the race committee signal boat and the course side of the mark at the port end of the line.
- 13.2 A boat starting later than 4 minutes after her starting signal will be scored DNS. This changes rules 63.1 and A5.

14 RECALLS

- 14.1 The RC will attempt to hail the recall numbers of OCS boats after the starting signal. This changes rule 29.1
- 14.2 The failure of any boat to hear the hail, promptness of the hail, failure to hail any boats, or the order of boats hailed shall not be grounds for redress. This changes rule 62.1.

15 CHANGE THE NEXT LEG OF THE COURSE

To change the next leg of the course, the committee will lay a new mark (or move the finishing line) and remove the old marks as soon as practicable.

16 THE FINISH

The finishing line will be between a staff displaying an orange flag on a RC boat and the course side of the designated finish mark.

17 PENALTY SYSTEM

Appendix P – Special Procedures for Rule 42 of the rules will apply.

18 TIME LIMIT

18.1 The time limit for each race will be 90 minutes for the first boat to finish.

18.2 Boats still racing but failing to finish within 15 minutes after the first boat in their class sails the course in accordance with rule 28.1 will be scored DNF. This changes rules 35 and A5.

19 EVENT PROTESTS AND REQUESTS FOR REDRESS

19.1 A boat is not permitted to protest another boat for breaking sailing instructions 2, 5.2, 5.3, 6.2, 6.3, 22, or 23. The penalty for breaking these instructions may be less than disqualification at the discretion of the protest committee. This changes rule 60.1(a).

19.2 A boat intending to protest about an incident that occurs in the racing area shall notify the Race Committee finish boat of her intention as soon as possible after finishing, identifying the boat(s) being protested. This changes rule 61.1(a).

19.3 Protests forms will be available at and returned to the protest desk located on the second floor of the Sailing Center at SDYC.

19.4 The protest time limit is 60 minutes after the RC boat docks.

19.5 A protest hearing schedule and the location of the hearings will be posted on the official notice board no later than 15 minutes following the end of protest time.

19.6 Notice of actions taken by the race committee or protest committee and a list of boats penalized under Appendix P will be on the official notice board.

19.7 On the last day of the regatta a request for reopening a hearing shall be delivered:

- a) within the protest time limit if the party requesting reopening was informed of the decision on the previous day.
- b) within the protest time limit, or 30 minutes after the decision is announced, whichever is later. This changes rules 62.2 and 66.

20 SCORING

20.1 Three (3) races are required to be completed to constitute a series.

20.2 When fewer than five (5) races have been completed, a boat's series score will be the total of her race scores.

20.3 When five (5) or more races have been completed, a boat's series score will be the total of her race scores excluding her worst score. 21.3 and 21.4 change rule A2.

21 REPLACEMENT OF EQUIPMENT

Substitution or repair or replacement of hulls, sails, or equipment will not be allowed without prior written approval of the Organizing Authority.

22 DISPOSAL OF TRASH

Boats observed purposefully discharging trash into the water will either be disqualified from all races sailed on the day the infraction is observed or be subject to other suitable disciplinary action, or both. Trash may be placed aboard support and race committee boats.

23 COACHING AND OUTSIDE CONTACT

- 23.1** This is a Grade 2 Event as defined in the US SAILING Championship Support Vessel Policy. See http://championships.ussailing.org/Youth/Coaching_and_Support_Vessels.htm
- 23.2** Except as provided in the Policy specified above, instructors, coaches and other support personnel and family members shall not go afloat in the defined racing area at any time during the clinic or racing days, except in spectator boats supplied by the regatta organizers.
- 23.3** Outside contact with competitors is prohibited on clinic and racing days commencing with the competitor's arrival at the host club and shall continue until dismissed by the National Coach on clinic days, or released by the Protest Committee on racing days.
- 23.4** Outside contact is defined as a parent, family member, spectator, or coach. Competitors shall not receive advice, instruction, or any type of outside assistance (other than that provided by US SAILING) including electronic communication devices while at the sailing venue during the clinic and racing days. It is the intent of this rule to prohibit contact between competitors and any person, who, in the opinion of the Protest Committee, is a coach, instructor or advisor.
- 23.5** The coaches provided by US SAILING will offer individual on-the-water instruction and group commentary/advice on land following each racing day. This coaching will be given to all competitors on an as equal basis as possible.
- 23.6** The Protest Committee may protest and disqualify a competitor for breaking the rules of this sailing instruction from all races on the day of the infringement.

24 DISCIPLINE

- 24.1** For Junior and Youth events or for junior or youth competitors in any US SAILING championship, no participant or competitor shall use, either on or off the water: marijuana or any other controlled substance (as defined in 21 U.S. Code 802) the possession of which is unlawful under 21 U.S. Code 841, or alcoholic beverages (distilled spirits, wine and beer, each described in chapter 51 of the U.S. Internal Revenue Code and intended for beverage use).
- 24.2** An alleged breach of 25.1 will not be grounds for a protest. However, when the protest committee believes that a competitor may have breached one of these regulations, it shall follow the process described in racing rule 69.1, and a competitor found to have breached one of these regulations shall be excluded from the remaining races of the series and, where practicable, be removed from the regatta venue and sent home. The competitor's boat will be disqualified from all races of the series.

25 PRIZES

- 25.1** US SAILING medals will be awarded to skippers finishing in the top 3 positions.
- 25.2** Additional prizes will be awarded at the discretion of the OA.

Attachment A - Borrowed Boats

A1 BOATS

A1.1 Complete boats will be provided for all competitors, who shall not, at any time, substitute or modify the supplied hull, mast, blades, sails, rigging, fittings, or lines or cause them to be modified in any way without the written consent of the Organizing Authority.

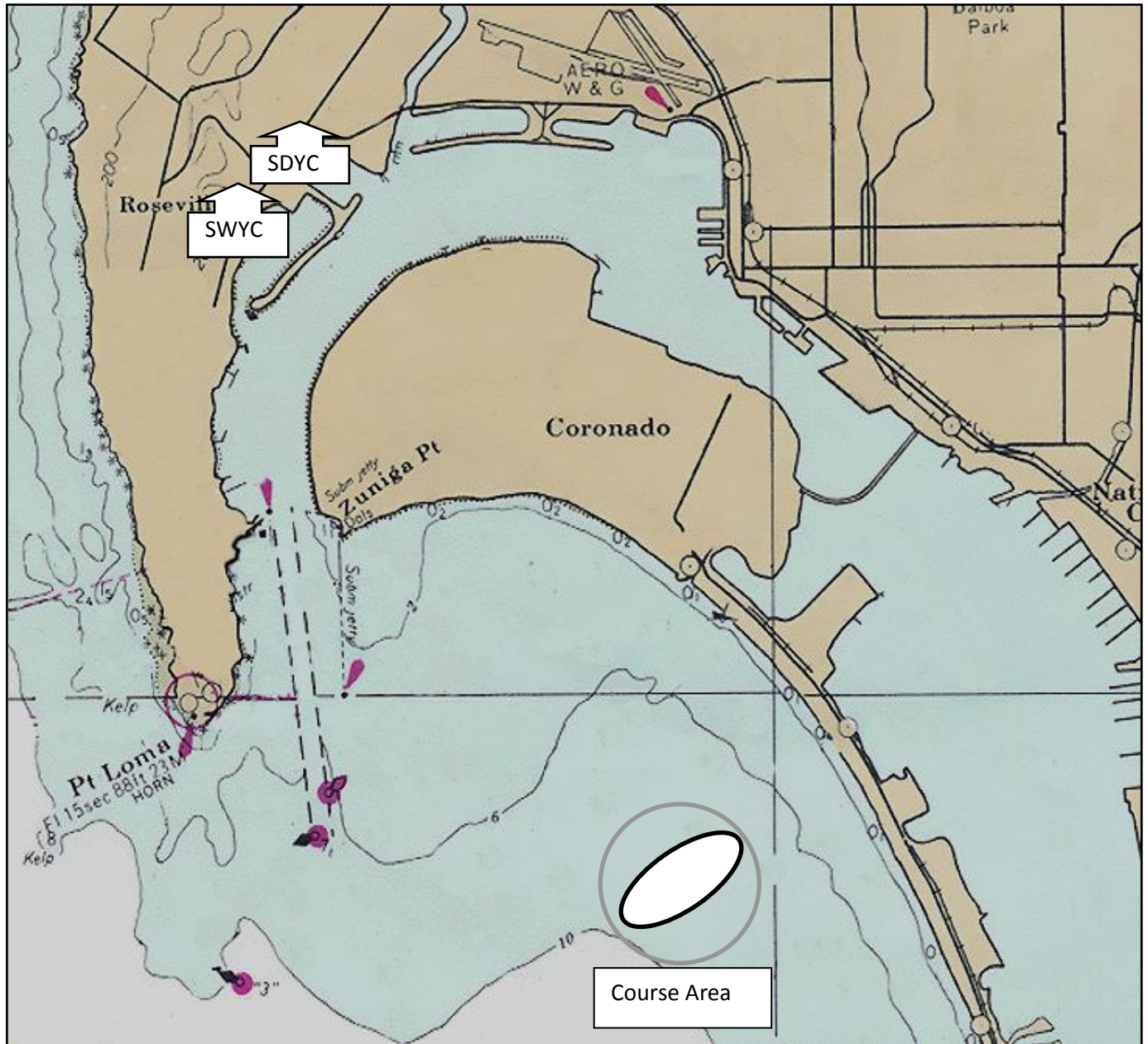
A1.2 Exceptions to A1.1 are:

- (a) a compass may be tied or taped to the hull or spars;
- (b) wind indicators, including yarn or thread, may be tied or taped anywhere on the boat;
- (c) hulls, centreboards and rudders may be cleaned, but only with water;
- (d) adhesive tape may be used anywhere above the water line; and
- (e) all fittings or equipment designed to be adjusted may be adjusted, provided the class rules are complied with.

A1.3 The penalty for not complying with one of the above instructions will be disqualification from all races sailed in which the instruction was broken.

A1.4 Competitors shall report any damage or loss of equipment, however slight, to the organizing authority's representative immediately after securing the boat ashore. The penalty for breaking this instruction, unless the protest committee is satisfied that the competitor made a determined effort to comply, will be disqualification from the race most recently sailed.

Attachment B - Venue Chart



26 APPROX. START AREA: LAT 30 38.04 N / LON 117 11.60 W

Course: windward/leeward course set to prevailing wind.

Location: Typical 1.5 – 2.5 nm from Zuniga Jetty "Z" at bearing of 130 mag.

Course leg length to 0.5 to 1.0 n.m.

Course buoys are 5' inflatable yellow tetrahedrons.

Attachment C - Courses

Course	Marks
2	Start, 1, 1A, Finish
4	Start, 1, 1A, 2s/,2p 1, 1A, Finish
5	Start,1,1A , 2s/2p,1,1A, 2s/2p, Finish

